



- Injected PU tread, hardness 95±3 Sh.A
- First class PA 6 wheel centre, neutral color, corrosion resistant.
- Plain or roller bearings
- Temperature range from -20°C to 70°C
- Maximum working speed 4 kmh
- Heavy duty housing P80G

																Codes
mm	mm	mm	mm	mm	mm	mm	mm	mm	mm	mm	mm	mm	mm	Load cap. (kg)	(Weight) kg	

PPMP-G08



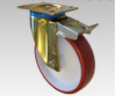
100	35	133	100x85	80x60	10,5	42	-	-	-	-	-	-	-	230	0,95	G08 210 100035
125L	35	161	100x85	80x60	10,5	44	-	-	-	-	-	-	-	230	1,00	G08 210 125035*
200	50	240	140x110	105x80/75	11	65	-	-	-	-	-	-	-	450	2,90	G08 210 200050

PPMPFR-G08



100	35	133	100x85	80x60	10,5	42	-	-	-	-	-	105	170	1,25	G08 214 100035
125L	35	161	100x85	80x60	10,5	44	-	-	-	-	-	105	230	1,30	G08 214 125035*
200	50	240	140x110	105x80/75	11	65	-	-	-	-	-	125	450	3,41	G08 214 200050

PPMP-G08



-	-	-	-	-	-	-	-	-	-	-	-	-	-	-	-	
200	50	240	140x110	105x80/75	11	65	-	-	-	-	148	-	450	3,14	G08 212 200050	
-	-	-	-	-	-	-	-	-	-	-	-	-	-	-	-	
-	-	-	-	-	-	-	-	-	-	-	-	-	-	-	-	

PFMP-G08



100	35	133	100x85	80x60	10,5	-	-	-	-	-	-	-	-	170	0,64	G08 220 100035
125L	35	161	100x85	80x60	10,5	-	-	-	-	-	-	-	-	230	0,78	G08 220 125035*
200	50	240	140x110	105x80/75	11	-	-	-	-	-	-	-	-	450	2,27	G07 220 200050